

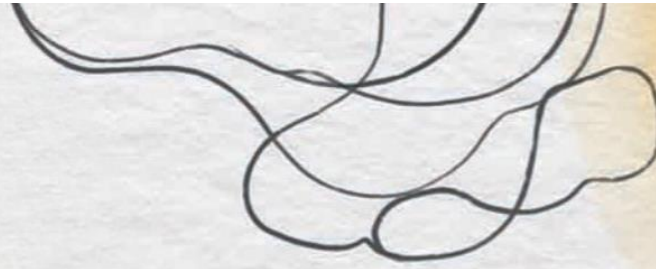


PLAY
IDENTITY

International meeting
on play & education

**Analytic
program**

24-26
April
at
Athens
Conservatoire



Friday 24/4/26

PART A' | 17:30 – 19:30

PANEL – DISCUSSION (GR&ENG)

“Play as a Tool for Innovation and Corporate Culture”

Antonis Papatheodoulou, Danae Deligeorgi, Pinelopi Theodorakakou, Charalambos Mainemelis, Dr. Meg Warren

Moderator: Vasiliki Blesiou

PART B' | 19.30 – 21:00

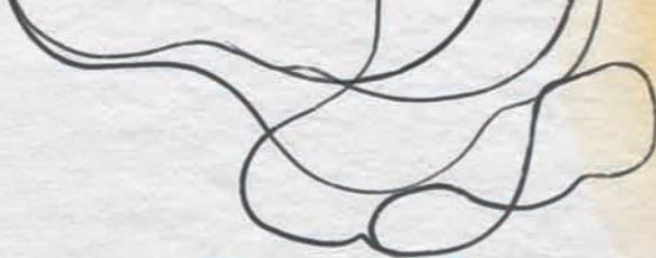
WORKSHOP

(FA1.1) “Let’s See” (GR)

Antonis Papatheodoulou, Olga Stefatou

PLAY IDENTITY

International meeting
on play & education



24-26
April
at
Athens
Conservatoire

Panel

PART A' | 17:30 - 19:30

“Play as a Tool for Innovation and
Corporate Culture”



Antonis Papatheodoulou

Children's Books Author, Creative Director



Dr. Danae Deligeorgi

Psychopedagogy, Cognitive, Emotional & Social
Guidance - Specializing in Neurodeviant People
Support



Pinelopi Theodorakakou

Co-Founder WHEN & inc.lude, Director of Empowerment
Programs & Educational Interventions



Dr. Charalambos Mainemelis

Professor of Organizational Behavior at ALBA
Graduate Business School



Dr. Meg Warren

Global Strengths-based, Allyship & Workplace Inclusion Expert,
Social-organizational psychologist & Professor of Management

Moderator: Vasiliki Blesiou,
Headmaster at Paixnidagogeio

**PLAY
IDENTITY**
International meeting
on play & education



Workshops

PART B' | 19.30 – 21:00
(FA1.1) "Let's See"

24 – 26
April
at
Athens
Conservatoire



Antonis Papatheodoulou

Children's Books Author, Creative Director

Olga Stéfátou
Photographer



Based on Antonis Papatheodoulou's book, we expand our visual perception and discover perspectives that reflect our view of today.

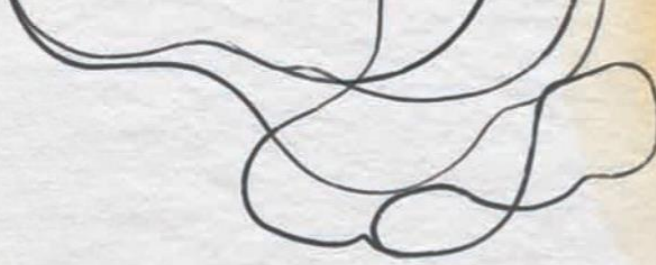
Through the lens of Olga Stéfátou and the imagination of each participant, we try to capture the moment in our own way – the only thing you will need is your mobile phone camera and an open heart.

The workshop is aimed at teachers of all levels but also at any person who is interested.

In any case, everything is a matter of perspective.



International meeting
on play & education



Saturday 25/4/26

24-26
April
at
Athens
Conservatoire

PART A' | 10:00 – 12:00

PANEL – DISCUSSION (ENG & GR)

“Play as Identity”

Angela Salmon, Urzula Markowska – Manista, Kyriaki Melliou, Koula Panagou

Moderator: Elinta Kalpogianni

PART B' | 10.30-12.30

WORKSHOP

(SA0.1): “Hiking in Hymettus with my baby” | Christina Flambouri, Virginia Ethnopoulos

PART C' | 13:00 –16:30

WORKSHOP

13:00-14:30 | SLOT 1 (90')

(SA1.1): “Become a connector through play and music” | Georgia Bertou, Spyridoula Pouliasi

(SA1.2): “Creating Connections” | Valentina Papadimitraki

(SA1.3): “Learning by making: Interdisciplinary learning through Artistic Creations” | Kyriakos Mourtzis

(SA1.4): “Holding the Thread: Play, Presence & Emotional Resilience – A Myth-Inspired Dramatherapy Workshop” | Anastasia Triantafyllidi / PESOPSI

(SA1.5): “The strengths exchange: From action to mindful presence” | Angele Papantoniou, Nadia Mitsiou

13:30-16:30 | SLOT 2 (150' -180')

(SA2.1): “ECHOES - An Atelier in Four Movements” | Marina Sgourou, Lina Marka / **GR & ENG**

(SA2.2): “Board games with superpowers: What Is the Secret?” | Marianna Kyriou

(SA2.3): “Play and Find” | Irini Tsimbragou

(SA2.4): “Learning Together: play, teamwork, and active learning in School” | Sofia Vgenopoulou

(SA2.5): “Pediatric First Aid in Nature” | Panagiotis Ioannidis, Agis Terzidis

15:00-16:30 | SLOT 3 (90')

(SA3.1): “Playing with Artificial Intelligence” | Πρόδρομος Τσιαβός

(SA3.2): «The Language of Play: Centering Children’s Voices, Identity, and Collective Stories»

Angela Salmon, Urzula Markowska-Manista, Kyriaki Melliou, Eleni Geroulanou / **ENG & GR**

(SA3.3): «Learn to unlearn» | Mary Davou / **ENG & GR**

(SA3.4): “Theatre from the beginning” | Katerina Alexaki

(SA3.5): «Playful Parenting» | Danae Triantafylli

PANEL DISCUSSION / ENG & GR

17:00 –19:00

“Positive Education in Practice”

Dana Fulwiler Volk, Sofia Vgenopoulou, Irini Karakasidou, Anna Touloumakou, Angele Papantoniou, Eleftheria Rousaki

Moderator: Gioula Blesiou

PLAY IDENTITY

International meeting
on play & education



Panel

PART A' | 10:00 – 12:00
“Play as Identity”

24 – 26
April
at
Athens
Conservatoire



Dr. Angela Salmon

Associate Professor, Early Childhood Education, CASE, Miami

Dr. Urzula Markowska – Manista

Associate Researcher and PhD Professor
at the Faculty of Education, University of Warsaw



Kyriaki Melliou

Kindergarten Education Counselor

Koula Panagou

Educator, Educational Programs Manager, Child Rights
Network



Coordination: **Dr. Elinda Kalpogianni**,
Founder of Paizontas, Pediatric Occupational Therapist

Workshops

PART B' | 10.30 - 12.30

(SA0.1) "Hiking on Hymettus with
My Baby"

24-26
April
at
Athens
Conservatoire



Christina Flambouri

Mountaineer, Co-Founder of Outdoor Moms



Virginia Ethnopoulou

Maternity Assistant, Co-Founder of Outdoor Moms

We will take a beautiful circular route that is close to the road network so that there is maximum safety but at the same time it will make us feel that we are in the heart of the forest.

We will start from the fire station of Kaisariani, we will take our break at Kalopoula (refreshment center) and we will continue to the hill of Taxiarches from where we will descend to the fire station. Christina and Virginia will share tips for excursions with our little ones, as well as for the appropriate equipment that will make the walks more comfortable and beautiful for everyone.

***Participations for caregivers with babies from 0 to 3 years old (they must be able to fit in a baby carrier or baby carrier backpack)**

Workshops

24-26
April
at
Athens
Conservatoire

PART C' | 13:00 - 14:30
(SA1.1) "Become a Connector through
Play and Music"

SLOT 1

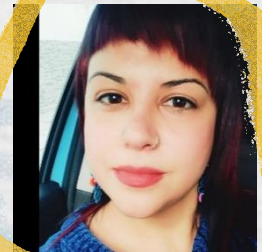


Georgia Bertou

Speech-Language therapist BSc, MSc at the
Psychopedagogical team of Paixnidagogeio

Spyridoula Pouliasi

Educator, Music Therapist, Educator at
Paixnidagogeio



There are moments when a song unites voices and a simple game brings young and old closer together.

In these moments, connection is born. Modern pedagogical approaches highlight play and music as essential tools for cultivating relationships, cooperation and empathy in the early school years. The workshop is aimed at teachers, parents and therapists who want to strengthen inclusion. Participants learn about experiential practices that create groups where each child has a voice, a role and a space to develop.

The adult becomes a "connector": he unites, strengthens and highlights the uniqueness of each child. Because the "connector" is not a role, it is an attitude.



Valentina Papadimitraki

Actress, Director, Theatre Educator, Creator of the Shoe on the Tree Theatre, Representative of ASSITEJ Greece - Greek Theatre Network for Children and Youth

Through a triptych of physical actions, oral language production games and psycho-emotional interactions, the workshop offers practical tools, borrowed from the art of theater, that can be utilized in groups of children, adolescents or adults.

Aiming for joy, we will focus on the ways in which play mobilizes participants physically, mentally and emotionally, strengthening the dynamics of the group, in a safe environment of trust and sharing.

The workshop is experiential and is aimed at teachers, parents and artists who work with small or larger groups.

Comfortable clothes are essential.

(SA1.3) "Learning by Making: Interdisciplinary
Learning through Artistic Creations"

SLOT 1



Kyriakos Mourtzis

Art teacher, Specialist in education and teaching of visual
arts (MA in Art & Education)

When knowledge takes shape as images, materials, and experiences, the child does more than memorize: they organize, connect, understand, and retain information.

In this program, learning is experienced through the body, the environment, and creative activity, using artistic installations that serve as "living" tools for thinking.

It offers a practical introduction grounded in pedagogy, with examples and ready-to-use tools that can be applied directly in the classroom.

(SA1.4) «Holding the Thread: Play, Presence & Emotional Resilience –
A Myth-Inspired Dramatherapy Workshop»



Anastasia Triantafyllidi / PESOPSI

MSc School Psychology, BSc (Hons) Psychology Science,
Psychotherapist – Dramatherapist – Theatrical Play Animator

The workshop is based on the archetypal motif of the labyrinth and the thread, as a metaphor for the developmental paths of children and adolescents. Ariadne is approached not as a mythological gender role, but as a symbol of maturity: the transition from control to connection and from guidance to stable presence. With this symbolic framework, the implementation of an experiential workshop, with elements of drama therapy and play, is proposed, aimed at parents and caregivers. It focuses on connection, observation and mental resilience.

The workshop aims at:

- Understanding relationships as a "thread", as a stable presence that allows exploration and autonomy, without control or overinvolvement.
- Strengthening the ability to observe the developmental paths of children and adolescents, recognizing when the "thread" of the relationship is stretched, tangled or weakened.
- The experiential understanding of the role of the adult as a companion and not a guide, through play and immersive engagement.
- Developing mental resilience of parents and caregivers, through the connection of play, body and collective experience.
- Creating a common language and meaning around care, relationships and growth, at an individual, family or professional level.



Workshops

PART C' | 13:00-14:30
(SA1.5) "The strengths exchange:
From action to mindful presence"

24-26
April
at
Athens
Conservatoire

SLOT 1



Angele Papantoniou

Flourishing Activator & Positive Psychology
Practitioner, Founder of the Human Flourishing
Movement & IPEN Greece, and IPEN Global Board

Nadia Mitsiou

Breathwork & Mindfulness Facilitator



This session explores the dynamic lifecycle of inner resources. It moves beyond simple self-awareness to examine **Character Strengths in Action**, highlighting how they can be prioritized, invested, and manifested when faced with real-world choices.

The journey is designed as a bridge between two worlds: the active energy of decision-making and the quiet power of mindful presence. It begins by navigating the landscape of strengths and values, uncovering what truly matters when action is required. To ground the experience, it concludes with an artistic mindfulness practice, using the breath as a tool for integration.

This transition moves from the excitement of "doing" to the clarity of "being," aligning external actions with an internal sense of balance and purpose.

Workshops

PART C' | 13:30-16:30
(SA2.1) "ECHOES -
An Atelier in Four Movements"

24-26
April
at
Athens
Conservatoire

SLOT 2



Marina Sgourou

BA in English Culture & Language Studies, MA in Education,
Founder and Pedagogical Director of Creative School, Co-founder
of the Reggio Inspired Network of Greece

Lina Marka

Preschool Teacher, Founder of the Kouvaraki
Preschool Education Center



ECHOES — An Atelier in Four Movements In the resonant halls of the Athens Conservatoire, where sound and history intertwine, this atelier unfolds as a journey through time in four movements.

Through a Reggio-inspired lens, we will explore the echoes that shape the educator's image — inherited experiences of the past, lived encounters of the present, traces that mark us, and the futures we choose to make possible.

Through material dialogues and an environment that acts as a thinking partner, participants are invited to reflect on the evolving role of the educator as researcher, listener, and co-constructor of knowledge, as research and identity meet — leaving the dialogue beautifully unfinished.

In the resonant halls of the Athens Conservatoire, where sound and history intertwine, this atelier unfolds as a journey through time in four movements.

Through a Reggio-inspired lens, we will explore the echoes that shape the educator's image — inherited experiences of the past, lived encounters of the present, traces that mark us, and the futures we choose to make possible.

Through material dialogues and an environment that acts as a thinking partner, participants are invited to reflect on the evolving role of the educator as researcher, listener, and co-constructor of knowledge, as research and identity meet — leaving the dialogue beautifully unfinished.

The workshop will be delivered in Greek. English support available.

(SA2.2) "Board games with superpowers:
What Is the Secret?"



Marianna Kyriou

Special Education Teacher for Early Childhood and Primary Education, MSc in Child Development

What is the role of board games in the development of children's executive functions according to their age?

How do board games facilitate or support learning objectives within the classroom?

Can a simple board game become the starting point for creating a new and original teaching tool?

Get ready for plenty of play, collaboration and competition, as well as critical and creative thinking.

(SA2.3) "Play and Find"



Eirini Tsimbragou

Dancer – Educational Drama Educator – Postgraduate Specialization in Performing Arts (Contemporary Theatre), Hellenic Open University – Founder & Artistic Director of LOOP DANCE LAB

The workshop explores the role of play as a tool in artistic creation and educational practice. Through the lens of contemporary educational and artistic theory, it examines how play—as a process of experimentation, imagination, and freedom—can serve as a bridge between learning and art.

Play is approached as a mechanism for exploration, improvisation, and collective discovery. Within this framework, the integration of playful methodologies into primary artistic research and education is proposed.

A tribute to the art of the Gutai group and their motto: "Search for what does not exist."

(SA2.4) "Learning Together: play, teamwork, and active learning at school"

SLOT 2



Sofia Vgenopoulou
Child Psychiatrist, Director

An interactive workshop inviting educators to explore the dynamics of play within the school environment.

Dedicated to the importance of play for healthy socio-emotional development and learning, the workshop unfolds as a collective journey: from simple cooperative games to experiential dramatic activities.

Participants will actively engage in exercises that enhance emotional regulation, creativity, empathy, and group cohesion.

Through shared reflection, they will explore ways to apply these practices in the classroom. The workshop is led by child psychiatrist and theatre director Sofia Vgenopoulou, combining scientific knowledge with artistic practice.

(SA2.5) "Pediatric First Aid in Nature"



Panagiotis Ioannidis
International Relations Specialist, Nurse, Paramedic

Agis Terzidis
Pediatrician, Academic Advisor for the MSc in "Global Health – Disaster Medicine" at the Medical School of the National and Kapodistrian University of Athens



In this workshop, covering a wide range of pediatric and general first aid topics for adults caring for children aged 0–12, participants will engage with both the theory and practice of how to be better prepared for unexpected situations that may arise, both at home and outdoors. The focus is on the pathways that make first aid especially relevant when spending time with children in nature, as well as on the dimension of prevention from a pediatric perspective.



Prodromos Tsiavos

Director of Intellectual Property and Innovation, European Public Law Organization / Director of Innovation and Digital Development, Onassis Foundation

The workshop explores the ethical and legal dimensions of integrating Generative Artificial Intelligence in education, through the lens of playful learning and creative experimentation. Starting from the fundamental question of the boundaries of using generative AI in everyday school practice, participants are invited to examine real-life application scenarios and the issues they raise regarding the protection of both students and educators. Through activities and collaborative processes, the workshop aims to support educators in co-creating informed AI policies that balance the need for creative play, open exploration, and responsible, safe pedagogical practice.

PART C' | 15:00-16:30

(SA3.2) "The Language of Play: Centering
Children's Voices, Identity, and Collective Stories"

SLOT 3



Dr. Angela Salmon

Associate Professor, Early Childhood Education, CASE, Miami

Dr. Urzula Markowska – Manista

Associate Researcher and PhD Professor
the Faculty of Education, University of Warsaw



Kyriaki Melliou

Kindergarten Education Counselor

Eleni Geroulanou

Kindergarten Teacher, Author, Founding Member of
Library4all



This interactive workshop explores how storytelling through play can empower diverse and vulnerable young children to develop agency and express their voices on issues that matter to them. Drawing on examples from international kindergarten classrooms, participants will examine children's play-based narratives through the lens of a relationship-centered approach between adults and children and consider how educators can intentionally create spaces that foreground children's perspectives.

Participants will also engage in a hands-on storytelling experience using Harvard's Project Zero strategies and multiple forms of play, reflecting on how these approaches can be adapted to their own educational contexts.

The workshop will be delivered in English. Greek facilitation available.

(SA3.3) "Learn to unlearn"



Mary Ntavou

Linguist, Author, Education Visionary

How can we reinvent teaching and learning through play? How can we challenge traditional practices, unlearn what no longer serves us, and rediscover learning through a playful, meaningful mindset? This interactive workshop invites language educators to step outside familiar frameworks and explore play as a powerful tool for engagement, creativity, and learning.

Through reflection, experimentation, and hands-on activities, participants will experience what it truly means to unlearn in order to learn, and leave inspired to bring playfulness back into their educational practice. **The workshop will be delivered in English. Greek language support available.**

(SA3.4) "Theatre from the beginning"

Katerina Alexaki

Theatre Educator, Performer, Co-founder of Artika Theatre Company



With 20 years of experience, the Artika team invites you to a unique experiential workshop on theatre for very young audiences.

- Can toddlers become "spectators"?
- How do we sustain their interest?
- What is the role of adults in this first encounter?
- How does theatre support the development of both children and adults?

Katerina Alexaki, co-founder and Head of Education at Artika, will guide us through play and dialogue into a world of discovery, demonstrating that art is a right for every child and adult from the very beginning of life.

Come dressed comfortably and ready to explore! Together, we will explore these questions, immerse ourselves in the magic of a first theatrical experience, and return to the very essence of meaning-making from the start.

**PLAY
IDENTITY**
International meeting
on play & education



Workshops

PART C' | 15:00-16:30
(SA3.5) "Playful Parenting"

24-26
April
at
Athens
Conservatoire



Danai Triantafylli

Psychologist, Parent Counselor & Trainer

This seminar explores the role of play as a fundamental tool for communication and connection between parents and children, recognizing that play is not just fun but a natural way for children to express emotions, process experiences, and learn to collaborate.

The seminar presents ways in which parents can use play to strengthen their relationship with their child, reduce everyday conflicts, and support the development of emotional regulation and cooperative skills.

PLAY IDENTITY

International meeting
on play & education

Panel

PART C' | 17:00 –19:00
“Positive Education in Practice”

24 – 26
April
at
Athens
Conservatoire



Dana Fulwiler Volk

CEO of the International Positive Education Network (IPEN),
Positive educator, and Global Wellbeing Leader



Sofia Vgenopoulou

Child Psychiatrist, Director



Eirini Karakasidou

Professor of Counseling Psychology, Department of Psychology,
Panteion University



Anna Touloumaku

Professor of Educational Psychology at Panteion
University, Founder of The Safe Space Project



Angele Papantoniou

Flourishing Activator & Positive Psychology Practitioner,
Founder of the Human Flourishing Movement & IPEN
Greece, and IPEN Global Board Member.



Eleftheria Rousaki

Drama Therapist, Actress, Personal Development and
Empowerment Consultant

Moderator: Gioula Blesiou, Head of Pedagogical
Design at Paidnigagogio, MEd SEBD



PLAY IDENTITY

International meeting
on play & education

Sunday 26/4/26

24-26
April
at
Athens
Conservatoire

PART A' | 10:00 -12:00

PANEL DISCUSSION / ENG (Greek Translation available)

«From Desk to Mud and Back Again»

Alexia Barrable, Andy Schieler, Michela Schenetti, Nicoletta Christodoulou

Moderator: Markos Zangas-Tsakiris

PART B' | 13:00 -16:30

WORKSHOPS

13:00-14:30 | SLOT 1 (90')

(SU1.1): “From Risk to Autonomy: Using Tools in Outdoor Learning” | Nefeli Lambrinou, Kyveli Koukoudaki

(SU1.2): “Free Play in Forest School: Myths and Reality” | Vasiliki Kompilakou, Nikos Malliaros

(SU1.3): “Sensory Play and Its Impact on Neurobiology” | Nadia Grigoriadou (GR&ENG)

(SU1.4): “CO-OP Playing: Removing Competition” | Irene Tsimbragou, Filareti Papadopoulou, Sofia Broid (GR&ENG)

(SU1.5): “Parenting& Play: Between the Possible and the Ideal” | Danae Triantafylli

(SU 1.6): «Who Gets to Play? » Voice, Story, and Belonging in a Reggio-Inspired Practice | Marina Sgourou, ENG

13:00-15:30 | SLOT 2 (120'-150')

(SU2.1): “Pedagogical Documentation: Following Children’s Traces in Outdoor Environments” | Georgia Gesiou, Andy Schieler / ENG

(SU2.2): “Play as Strategy, Innovation and Organizational Development” | Stella Kasdagli

(SU2.3): “Nature, Parenting and Positive Education” | Vasiliki Philippa & Efi Papamatthiaki

(SU2.4): « Upstanders: Photography & the Art of Allyship» | Dr. Meg Warren, liminal ENG

(SU2.5): «Functional Nutrition and Children’s Cognition» | Vagia Diminikou, Dr. Med Ioannis Bouchelos

(SU2.6): “Forest Atelier: Artistic Adventures Inspired by Nature” | Victoria Remoundou, Laura Maragoudaki

16:00-17:30 | SLOT 3 (90')

(SU3.1): “Play for All Children: How the Right Becomes Practice” | Elena Soukakou

(SU3.2): “Thrapeutic Intervention in Natural Environments for Children on the Autistic Spectrum” | Giannis Andreopoulos, Marina Kalobratsou

(SU3.3): “Children Playing (Again) in Nature” | Vicky Kotsori, Mina Ananiadou

(SU3.4): “Designing the Schoolyard Differently...” | Amalia Stratou

(SU3.5): “From the Void to the New” | Spyros Moschoutis, Giannis Kontaratos, Eleftheria Rousaki

(SU3.6): “Play in Nature, with Nature, for Nature” | Rosa Triantafyllidi

PLAY IDENTITY

International meeting
on play & education

Panel

PART A' | 10:00 -12:00
«From Desk to Mud and Back Again»

24-26
April
at
Athens
Conservatoire



Alexia Barrable

Senior Lecturer in Social Science at Queen Margaret University,
Edinburgh

Andy Schieler

Researcher, Institute for Education, Upbringing and Care in
Childhood, Koblenz University, Germany



Michela Schenetti

Associate Professor on Education, University of Bologna

Nicoletta Christodoulou

Associate Professor of Curriculum Studies and Instruction at
Frederick University, Cyprus



Moderator: Markos Zangas-Tsakiris, Co-founder of Paichnidagogeio,
Trainer - Consultant at Inside out Nature

Workshops

PART B' | 13:00-14:30

(SU1.1) "From Risk to Autonomy: Using
Tools in Outdoor Learning"

24-26
April
at
Athens
Conservatoire

SLOT 1



Nefeli Lambrinou

Kindergarten Teacher, Forest School Leader, Founder of the Forest School "Kariatzoules"

Kyveli Koukoudaki

Kindergarten Teacher, Forest School Leader, Educator at the Forest School "Kariatzoules"



This workshop focuses on the use of tools in outdoor learning as a means to enhance creativity, autonomy, and self-confidence.

Participants will have the opportunity to engage in a collaborative, hands-on experience, discovering how to incorporate tools into their outdoor programs and allow children to acquire this knowledge safely, with respect, and confidence in their abilities*.

Through constructions and open-ended activities, we will explore the pedagogical value of taking and managing risk in natural environments. We will discuss how to assess risk, manage it safely, and the benefits that arise when children, with appropriate support, take on the risk of using tools.

***This workshop is introductory and does not constitute complete or certified training in the use of tools with children.**

(SU1.2) "Free Play in Forest School: Myths and Reality"



Vasiliki Kobilakou

PhD, Head of the Forest School "Pefkites"

Nikos Malliaros

Mechanical Engineer, Forest School "Pefkites"



Free play in Forest Schools has often been subject to misunderstandings that can divert the conversation from the essence of its pedagogical approach. Here, the Forest Educator does not rely on visible "boundaries" or walls, nor on unquestioning acceptance of their authority by the students. The ultimate goal is to guide the pedagogical process in such a way that, in the long term, the educator becomes "invisible," while everything functions as it should. The workshop will conclude with a hands-on bushcraft activity.

(SU1.3) "Sensory Play and Its Impact on Neurobiology"



Nadia Grigoriadou

Messy Play Facilitator, English Teacher, Outdoor Pedagogue

How the experience of sensory play can be harnessed to support the development of a child, or anyone who tries it.
How the sense of exploration, touch, and freedom transforms us when we allow ourselves to "immerse" in a subject.
What practical steps and considerations are needed beforehand, and how they influence the experience afterward.
The workshop will be delivered in Greek. English language support available.



Eirini Tsimbragou

Dancer – Educational Drama Educator – Postgraduate
Specialization in Performing Arts (Contemporary Theatre), Hellenic
Open University – Founder & Artistic Director of LOOP DANCE LAB

Filareti Papadopoulou

Choreographer, Member of the mixed dance group Artogether at
Liminal



Sofia Broid

Designer, Creator of Yaaaam!

The session focuses on removing competition and exploring how non-competitive play can serve as a transformative tool in positive education.

It examines how the absence of a competitive framework can reshape learning conditions and how an inclusive environment can function as a tool for both education and artistic creation, enhancing collaboration and emotional balance.

The theme emphasizes the importance of intrinsic motivation and empathy as drivers of social cohesion. Through experiential practice, the workshop will focus on freeing participants from the logic of comparison and superiority, aiming for outcomes that can act as catalysts for inclusive and feedback-oriented forms of education and artistic production.

The workshop will be delivered in Greek. English language support available.



Workshops

PART B' | 13:00-14:30

SLOT 1

(SU1.5) "Parenting & Play: Between the Possible and the Ideal"



Danai Triantafylli
Psychologist, Parent Counselor & Trainer

In today's world, parents are exposed to an overwhelming amount of information and advice about how they "should" raise their children. This often leads to an exhausting pursuit of perfect parenting—an ideal that is usually unrealistic and creates more stress than genuine support.

The aim of the seminar is to highlight which aspects of parenting truly matter—such as the parent-child relationship, emotional security, and the ability to repair mistakes—and to help parents approach their role with greater calm, authenticity, and confidence in themselves.

(SU 1.6) «Who Gets to Play? Voice, Story, and Belonging in a Reggio-Inspired Practice»



Marina Sgourou
BA in English Culture & Language Studies, MA in Education,
Founder and Pedagogical Director of Creative School, Co-founder
of the Reggio Inspired Network of Greece

In this experiential workshop, participants will step into the living space between listening and play. Rooted in the storytelling work of Vivian Gussin Paley and resonating deeply with the Reggio Emilia image of the child as capable and expressive, this workshop explores what emerges when storytelling becomes curriculum — a living language through which children explore identity, relationship, belonging, and the ethics of inclusion. Together, we will consider how the adult's response becomes an echo — shaping, holding, and extending a child's voice within the classroom community. Educators will leave with a renewed understanding of authorship, fairness, and the responsibility of listening in everyday practice.

The Workshop will be delivered in English. Greek language support available.



Workshops

PART B' | 13:00-15:30

(SU2.1) “Pedagogical Documentation:
Following Children’s Traces in Outdoor
Environments”

24-26
April
at
Athens
Conservatoire

SLOT 2



Georgia Gesiou

Kindergarten Teacher, Researcher & Outdoor
Learning and Play Consultant

Andy Schieler

Researcher at the Institute for Education, Upbringing, and Care in
Childhood, Koblenz University, Germany



As outdoor play and learning gain prominence, many documentation practices still reflect indoor, outcome-focused approaches that overlook the complexity of children’s experiences outdoors. How can pedagogical documentation reflect the embodied, relational, and place-shaped character of outdoor learning?

This experiential workshop invites participants to re-imagine pedagogical documentation as a process of observing children’s play, relationships, and encounters with the natural world.

Through activities, role-play, and collaborative interpretation, participants will explore more relational, inclusive, and place-responsive ways of making learning visible outdoors.

The Workshop will be delivered in English. Greek language support available.



Workshops

24-26
April
at
Athens
Conservatoire

PART B' | 13:00-15:30

(SU2.2) "Play as Strategy, Innovation and
Organizational Development"

SLOT 2



Stella Kasdagli

Co-founder of WHEN & inc.lude, Head of Research Programs &
Strategic Partnerships

This workshop focuses on the importance of play as a meaningful—not superficial—learning tool in corporate training. In an environment where information is abundant but attention is limited, play-based methodologies can act as a catalyst for deeper understanding, active participation, and real behavior change.

Through experiential activities, we examine how incorporating game elements—challenge, feedback, collaboration, experimentation, and safe failure—enhances participant engagement, activates different learning styles, and strengthens the team’s collective intelligence.

At the same time, we explore the distinction between “fun” and “effective” play, emphasizing the connection of each activity to clear learning objectives and observable outcomes.

Participants will gain practical tools to integrate play techniques into trainings, workshops, onboarding processes, and internal meetings, adapting them to the needs of their own team or organization.

The goal of the workshop is to shift the perception of play from a “break” in learning to a strategic lever for learning, innovation, and organizational development.



Vasiliki Philippa

Early Childhood Educator, Nature Educator, Trainer in Positive
Education

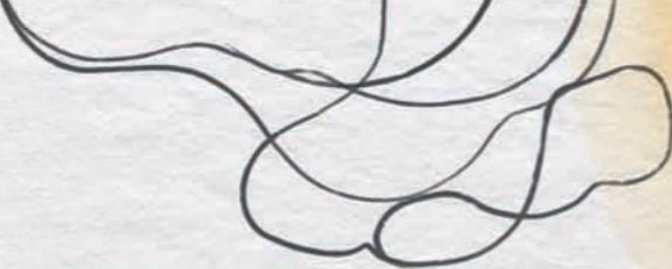
Efi Papamatthaiaki

Early Childhood Educator, MSc in Environmental Education



How can we, as parents and caregivers, support children in nature?
What do we really need to prepare? How important is the weather?
How do we respond to the unexpected?

Together, we will explore how to make the most of the stimuli that nature offers us naturally—safely,
with trust, and through meaningful connection.



Workshops

PART B' | 13:00-15:30

(SU2.4) «Upstanders: Photography & the
Art of Allyship»

SLOT 2

Dr. Meg Warren

Global Strengths-based, Allyship & Workplace Inclusion Expert,
Social-organizational psychologist & Professor of Management



liminal

a non-profit organization, promoting equal participation in culture through inclusive artistic education, research, and accessible productions, fostering a diverse community and enriching societal impact

Discover how photography and play can turn bystanders into upstanders — a hands-on, arts-powered experience exploring inclusion, strength, and belonging through the lens. Featuring Klik-able, Liminal's inclusive photography methodology is designed so everyone can participate, regardless of ability.

This session reframes allyship not as a reaction to harm, but as a proactive, strengths-driven practice that nurtures belonging in learning and cultural environments. Using photography as an experiential lens, participants explore empathy, perspective-taking, and care — then co-create ideas for bringing allyship and arts-based practices into their own contexts.

Leave with new tools, fresh insight, and a deeper sense of inclusion as a lived, collective experience.

Practical Info for Participants

Join us for a guided, playful city workshop with blindfolded activities to explore your senses and perspective. Work in pairs, alternating as photographer and guide, using your own smartphone—no photography experience needed. Wear comfortable clothing and shoes suitable for walking and moving freely.

During blindfolded activities, your partner may gently guide you by touch (e.g., arm or shoulder) in a safe and respectful way—you'll also guide your partner similarly. Clear instructions from facilitators ensure a safe, supportive, and inclusive experience.

Participate at your own pace—you can pause or opt out anytime. Please let us know any accessibility needs in advance, and come curious and open to discovering the city in a new way.

Delivered in English · Greek language support available



Vagia Diminikou

Nutritionist, Co-founder of Jovian Health Lab

Dr. Med Ioannis Bouchelos

Doctor, Co-founder of Jovian Health Lab



A meeting of body, brain, and mind.

In this talk, we will explore how nutrition affects children's neurobiological development and how it is directly linked to cognitive performance, behavior, and emotional balance.

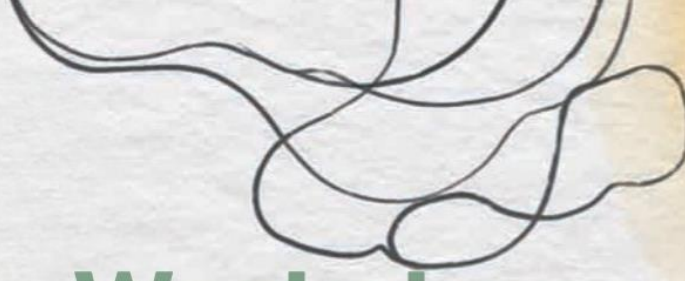
What happens in the brain when the quality of food changes?

How are concentration, memory, mood, and behavioral regulation affected?

And how can everyday nutrition serve as a practical tool to support learning and mental well-being?

Starting from something very simple—our food—we will examine how nutrition influences the nervous system, the gut microbiome, and the mechanisms related to cognitive and behavioral functioning.

Because often, change begins with something small: what's on our plate.



Workshops

PART B' | 13:00-15:30

(SU2.6) "Forest Atelier: Artistic Adventures
Inspired by Nature"

SLOT 2



Viktoria Remoundou

Early Childhood Educator, Forest School Leader at Moraitis
School Kindergarten

Lora Maragkoudaki

Visual Artist, Forest School Educator at Moraitis
School Kindergarten



How can we explore the natural environment around us through art?
How can experimenting with visual art techniques capture a child's experience in nature?
This is a hands-on workshop for educators and artists, approaching the principles of Forest Schools
through artistic expression.

PART C' | 16:00-17:30

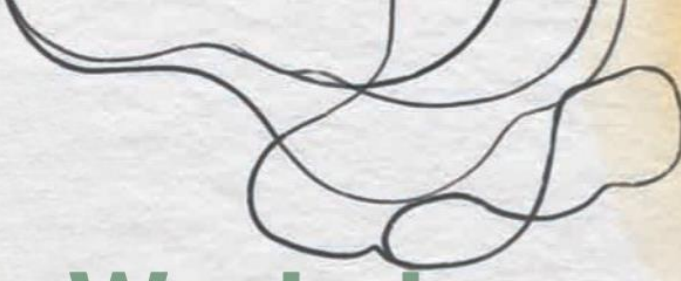
(SU3.1) "Play for All Children: How the Right Becomes Practice"



Elena Soukakou

Honorary Research Fellow, School of Education, University of
Roehampton, United Kingdom

In this workshop, we will have the opportunity to discuss and explore ways and methods that can
make any early childhood setting a place where relationships with all children can flourish.
A developmentally appropriate environment for play, where every child feels welcomed!



Workshops

PART B' | 16:00-17:30

(SU3.2) "Thrapeutic Intervention in Natural
Environments for Children on the Autistic
Spectrum"

SLOT 3



Giannis Andreopoulos
Occupational Therapist

Marina Kalompratsou
Speech Therapist



How can the natural environment serve as a therapeutic support framework for children on the autism spectrum?

In what ways does nature contribute to emotional regulation, reduce anxiety, and enhance active participation?

This workshop introduces a holistic intervention approach, using forests and natural landscapes as supportive environments for learning and development. Participants will engage in practical activities such as exploration, group missions, and movement-based games, discovering how both structured and free play strengthen joint attention, social interaction, communication, and initiative.

The workshop will also cover methods for organizing a safe and predictable setting, using visual supports, and setting functional skill goals. Through experience-sharing and reflection, the session highlights nature as a space for meaningful participation and therapeutic empowerment.

(SU3.3) "Children Playing (Again) in Nature"

Viky Kotsori

Kindergarten Teacher, Founder of "Omada Vounou"



Mina Ananiadou

Trainer, Facilitator of Non-Formal Learning Programs,
Choreographer and Dancer

We invite you to become children again and play once more!

In an era of high demands for efficiency and productivity, where play is often seen as a waste of time, we are reminded why the adjective "free," often used to describe it, is redundant. We reconnect with the joy of play when it comes from our intrinsic motivation, sharing again the delight of exploration and unstructured imagination.

But what happens when adults appropriate children's play, sacrificing it on the altar of guided and predetermined learning?

In this workshop, we will reflect on our pedagogical practices around play. Key elements include observation, multi-sensory and kinesthetic perception, and nature, with the body serving as a means of connection and attunement to ourselves, others, and the world at large.

(SU3.4) "Designing the Schoolyard Differently..."



Amalia Stratou

Architect, Co-founder of "I Avli tou Scholiou Allios",
Member of the ISGA Leadership Council

What would a schoolyard look like if it were not just a space for breaks but a space for life? A yard that stimulates thinking, enhances expression, fosters relationships, and supports the learning and holistic development of children and adolescents?

This workshop invites educators, parents, and students to redefine the schoolyard as a living pedagogical ecosystem.



Workshops

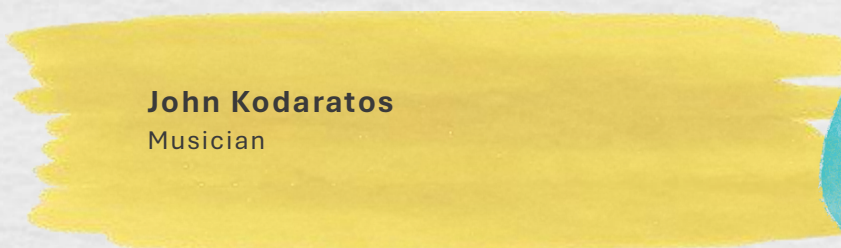
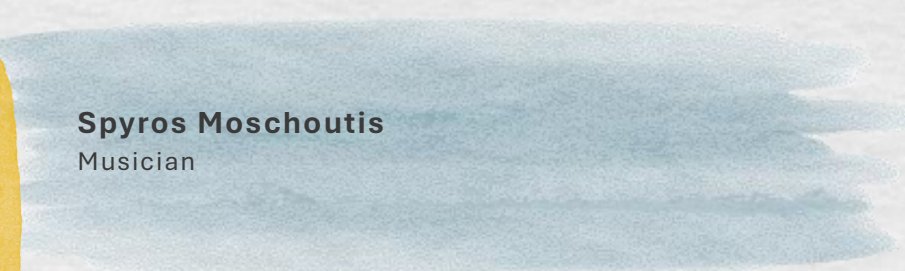
PART B' | 16:00-17:30

(SU3.5) "From the Void to the New"

SLOT 3



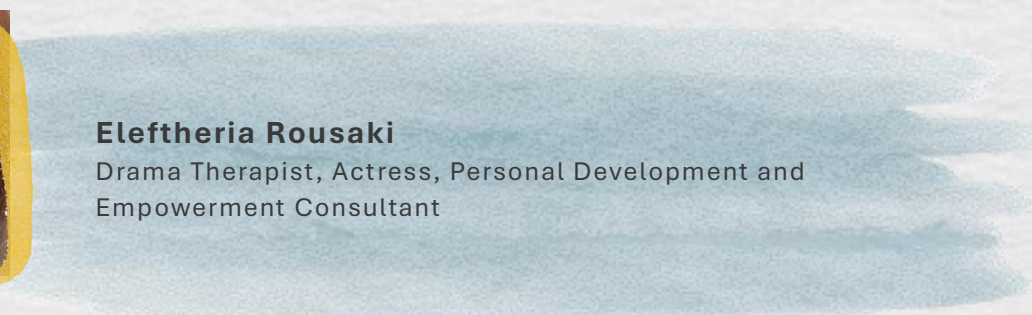
Spyros Moschoutis
Musician



John Kodaratos
Musician



Eleftheria Rousaki
Drama Therapist, Actress, Personal Development and
Empowerment Consultant



As part of Play Identity, the experiential music workshop **"From the Void to the New"** explores the delicate moment when "lack" transforms into possibility. When the feelings of "I don't have," "I can't," or "something is missing" arise, what is really happening? Is it truly a dead end—or an opportunity for learning? What occurs when we sense that something is missing? When the "void" occupies the space? When doubt appears? The workshop **"From the Void to the New"** turns this moment of doubt into a field for exploration. Using music and voice as tools, it investigates how the "Oops! Now what?" moment can be transformed, allowing something new to emerge.

**PLAY
IDENTITY**
International meeting
on play & education

Workshops

PART B' | 16:00-17:30

(SU3.6) "Play in Nature, with Nature, for Nature"

24-26
April
at
Athens
Conservatoire

SLOT 3



Roza Triantafyllidi

Educator (Kindergarten Teacher – Museum Educator – Forest School Leader/Level 3), Founder of the Social Cooperative Enterprise "Pareá tou Dásous"

How can we pedagogically approach nature through play, supporting holistic development and fostering environmental awareness in children?

In this workshop, we will share different ways of experiential connection with the natural world, with the group, and with ourselves through play—using nature both as a setting and as a tool for learning and discovery.

Drawing inspiration from various contemporary and eco-centered educational approaches, such as experiential learning, Forest Schools, and Waldorf-Steiner Educational Arts, we will explore group and movement-based games that engage the senses, introduce the natural environment, encourage interaction with natural materials, and promote environmental awareness